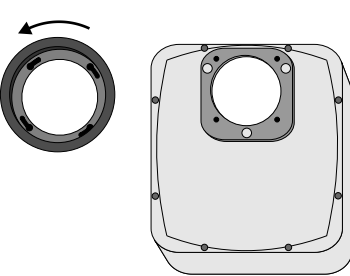
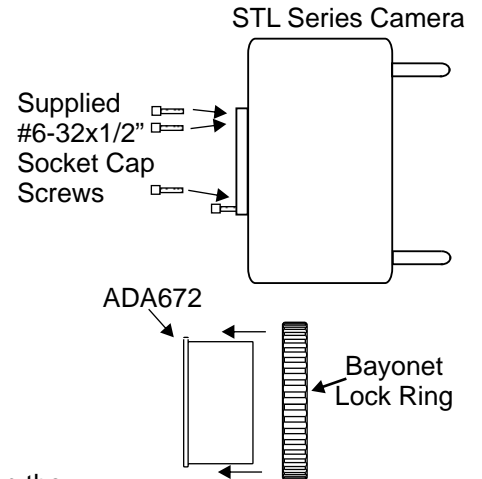
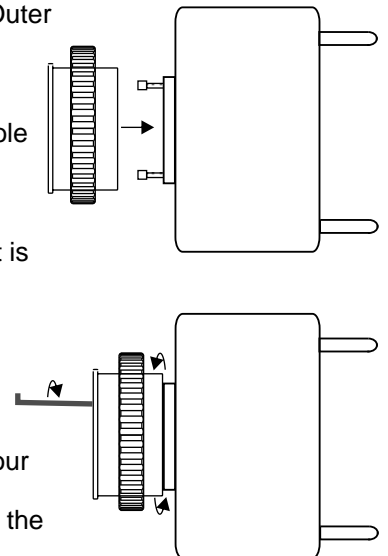


Instructions for using your STL Adapter for 6x7 Outer Bayonets including most Astro-Physics Prime Focus Field Flatteners (ADA671 & ADA672)

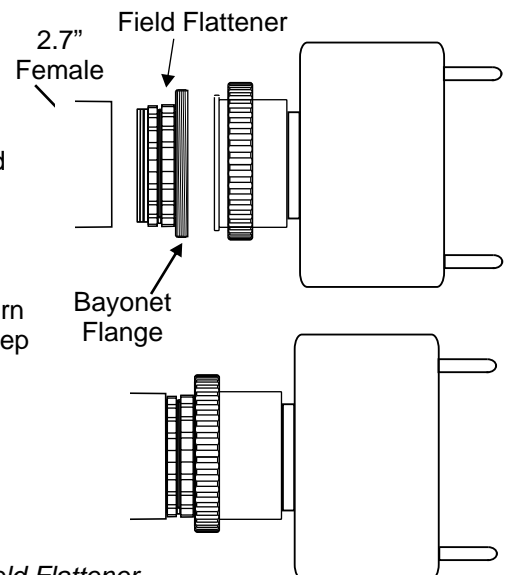
1. To attach the STL Adapter to your camera you must first remove the 2" nosepiece from the accessory mounting block. Do not remove the mounting block. It is strongly suggested that you place a protective cover over the opening in the camera to protect the delicate sensor and electronics inside. Your cover should still allow you access to the four screw holes in the accessory mounting block.
2. Carefully start the four 6-32x1/2" socket head cap screws (included with the STL Adapter) into the four attachment holes of the accessory mounting block. Turn each screw in about two full turns.
3. Remove the outer bayonet locking ring from your 6x7 Outer Bayonet Adapter (ADA2767) or from your Astro-Physics 2.7" or 4" Field Flattener.
4. Place the locking ring over the camera end of the STL Adapter with the tabs on the camera side and the locking ring's threads on the objective side. Make sure that the locking ring is facing the right direction for attachment to its mating surface on the 6x7 Outer Bayonet Adapter or Prime Focus Field Flattener.
5. Holding on to both the locking ring and the STL Adapter, carefully mount the STL Adapter onto the camera by inserting the four screw heads through the radius-cut keyhole slots in the STL Adapter.



6. Twist the STL Adapter into place making sure that it is firmly seated at the small end of each keyhole slot.
7. Gently snug all four socket head cap screws, and then double check that the adapter is still properly seated.
8. Firmly tighten the four socket head cap screws. Your STL camera should now be rigidly attached to the STL Adapter with the bayonet locking ring hanging loose on the adapter.



9. Seat the STL Camera / STL Adapter assembly into the flange of the 6x7 Outer Bayonet Adapter or Field Flattener. Slide the bayonet lock ring forward and thread it onto the body of the 6x7 Outer Bayonet Adapter or Field Flattener. When you tighten the bayonet lock ring, be sure that you are holding the assembly in place and that everything is square with the flanges properly mated.



10. To frame your exposure, simply loosen the bayonet lock ring a bit and turn the camera. Again, be careful when re-tightening the bayonet lock ring to keep everything square and properly mated.

Please note: the illustration shows a typical Astro-Physics 2.7" Prime Focus Field Flattener. The procedure is the same for the 4" Field Flatteners or for the 6x7 Outer Bayonet Adapter (ADA2767)